

Painter

INNOVATION
BEYOND
PERFECTION

ELEPHANT



Exclusive Range of Spray Guns...

Conventional
/ Texture
Spray Gun

Professional
Spray Gun

Automatic Gun /
Paint Tank

H-827 /
Airless Sprayer

Pen Gun /
Double Nozzle
& Side Cup Gun

Electric / Protective
/ Lubricative Gun

Air Blow Gun /
Pressure Cleaning
Gun

Foam Gun

Pressure
Cleaning Gun

Other Spray
Gun

Spray Gun
Cup

Brass Fittings



1 Pint
PS-01



1/2 Pint
PS-02



1/4 Pint
PS-03



1 Pint
PR-01



1/2 Pint
PR-02



HVLP
H-827



TG-16



TG-17



TG-22

Note : 50/- Extra On Net Cost for Nozzle Size 2.0 mm and 2.5 mm in PS 01 and PR 01

Model No.	Operating Pressure	Cup Capacity	Nozzle Size (mm)	Feed	Air Inlet	Weight	Std. Packing
PS-01	20-50 psi	600 ml	1.4,1.7,2.0,2.5	Gravity	1/4"	710 gm	20 Pcs.
PS-02	20-40 psi	100 / 300 ml	1.2	Gravity	1/4"	410 gm	30 Pcs.
PS-03	20-40 psi	100 / 300 ml	0.9	Gravity	1/4"	325 gm	30 Pcs.
PR-01	30-60 psi	600 ml	1.4, 2.0, 2.5	Gravity	1/4"	650 gm	20 Pcs.
PR-02	30-50 psi	300 ml	1.2	Gravity	1/4"	410 gm	30 Pcs.
H-827	20-40 psi	600 ml	1.4, 1.7, 2.0	Gravity	1/4"	650 gm	20 Pcs.
TG-16	80-100 psi	2 Ltr.	-	Gravity	5/16"	905 gm	9 Pcs.
TG-17	80-100 psi	2 Ltr.	-	Gravity	1/4"	735 gm	12 Pcs.
TG-22	80-100 psi	3.5 Ltr.	-	Gravity	1/4"	480 gm	6 Pcs.

Note : We Shall Not Be Responsible For Any Breakage/Damage In Transit. However, All Spare Parts Remain Available At Extra Cost.



1 Pint
PF-01



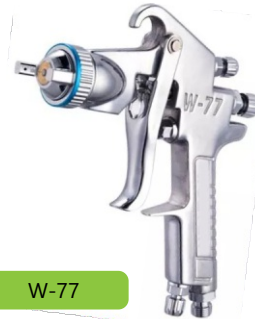
1/2 Pint
PF-02



1 Pint
PJ-01



W-71



W-77



W-101



W-200



SF-12



W-71 LIGHT

Model No.	Operating Pressure	Cup Capacity	Nozzle Size (mm)	Feed	Air Inlet	Weight	Std. Packing
PF-01	30-40 psi	600 ml	1.3,1.5,1.7,2.0,2.5	Gravity	1/4"	680 gm	10 Pcs.
PF-02	20-30 psi	300 ml	0.5,0.8,1.0,1.2	Gravity	1/4"	460 gm	10 Pcs.
PJ-01	30-40 psi	600 ml	1.3,1.5,1.7, 2.0,2.5,3.0	Gravity	1/4"	660 gm	10 Pcs.
W-71	40-50 psi	-	1.3,1.5,1.8	Pressure	1/4"	460 gm	5 Pcs.
W-77	40-50 psi	-	1.5,2.0,2.5	Pressure	1/4"	540 gm	5 Pcs.
W-101	30-40 psi	-	0.8,1.0,1.3,1.5	Pressure	1/4"	350 gm	5 Pcs.
W-200	30-40 psi	-	1.3,1.5	Pressure	1/4"	430 gm	5 Pcs.
SF-12	40-60 psi	800 ml	1.7	Suction	1/4"	925 gm	10 Pcs.
W-71 LIGHT	40-50 psi	400 ml	1.3,1.5	Suction	1/4"	460 gm	10 Pcs.

Note : We Shall Not Be Responsible For Any Breakage/Damage In Transit. However, All Spare Parts Remain Available At Extra Cost.

All Spare Parts Available

1.0 mm-E2P / 1.3 mm-H2
1.2 mm-G2P / 1.5 mm-K2



WA-101



WA-200



ST-6



A-100

Prona



MRS-F
RELEASE AGENT

NEW



PT-02



PTA-20 / 10
WITH AGITATOR



PT-20 / 10
MANUAL

NEW



PT-08

Model No.	Operating Pressure	Nozzle Size (mm)	Feed	Air Inlet	Weight
WA-101	40-50 psi	0.8, 1.0, 1.2, 1.3, 1.5, 1.8, 2.0	Pressure	1/4"	280 gm
WA-200	40-50 psi	1.2, 1.3, 1.5, 1.8, 2.0	Pressure	1/4"	310 gm
ST-6	40-50 psi	0.5, 1.0, 1.3, 2.0	Pressure	6 mm	425 gm
A-100	40-50 psi	1.0, 1.3	Pressure	1/4"	455 gm
MRS-F	20-30 psi	0.3, 0.5	Pressure	4 mm	250 gm
Model No.	Capacity	Working Pressure (bar)	Paint Output	Weight	
PT-02	2 Ltr.	3.5-4	1/4"	1.5 Kg	
PTA-20/10	20/10 Ltr.	1.4-2.1	1/4"	21.95 / 14.85 Kg	
PT-20/10	20/10 Ltr.	1.4-2.0	1/4"	21.35 / 13.65 Kg	
PT-08	10 Ltr.	1.4-2.0	1/4"	12.30 Kg	



H-827

AURITA



H-827

POWER



H-827

SUPER AUTO



818-C



Airless Sprayer

R-450



Putty Sprayer

PT-995

AIRLESS SPRAY GUNS TIPS :-



AIRLESS SPRAY HOSE :- Length : 15 mtr. Connection Size : 1/4" F



Model No.	Operating Pressure	Cup Capacity	Nozzle Size (mm)	Feed	Air Inlet	Weight	Std. Packing
AURITA	20-40 psi	600 ml	1.3, 1.5, 1.7, 2.0	Gravity	1/4"	640 gm	20 Pcs.
POWER	20-40 psi	600 ml	1.3, 1.5, 1.7, 2.0	Gravity	1/4"	560 gm	20 Pcs.
SUPER AUTO	20-40 psi	600 ml	1.3, 1.5, 1.7, 2.0	Gravity	1/4"	520 gm	20 Pcs.
Model No.	Operating Pressure	Tip Size	Pattern Width	Feed	Inlet Fitting	Weight	Std. Packing
818-C	500 psi	517	254-305 mm	Pressure	1/4"	560 gm	1 Pc.
Model No.	Voltage	Motor Power	Max. Flow Rate	Length of Hose	Max. Pressure	Weight	
R-450	220 V	1.2 HP	2.2 L/min	15 Mtr.	3300 psi	15.5 Kg.	
PT-995	220-240 V	5 HP	5.5 L/min	15 Mtr.	3300 psi	30 Kg.	



AB-17



AB-19



AB-21



DN-18



DN-19



Air Controller
AC-02 / AC-03



LPH-50



F-2



K-3

Model No.	Operating Pressure	Cup Capacity	Nozzle Size (mm)	Feed	Air Inlet	Control	Weight	Std. Packing
AB-17	10-30 psi	2 ml	0.3	Gravity	6 mm	Double Action Push Button	70 gm	30 Pcs.
AB-19	10-30 psi	7 ml	0.3	Gravity	6 mm	Double Action Push Button	100 gm	30 Pcs.
AB-21	10-30 psi	20/40 ml	0.3	Gravity	6 mm	Trigger Action	155 gm	10 Pcs.
DN-18	30-50 psi	-	1.0	Pressure	1/4"	Trigger Action	400 gm	1 Pc.
DN-19	30-50 psi	-	1.3	Pressure	1/4"	Trigger Action	865 gm	1 Pc.
LPH-50	20-30 psi	300 ml	1.0	Gravity	1/4"	Trigger Action	220 gm	1 Pc.
F-2	30-40 psi	100 ml	1.0	Gravity	1/4"	Trigger Action	220 gm	20 Pcs.
K-3	30-40 psi	100 ml	0.8	Gravity	1/4"	Trigger Action	220 gm	20 Pcs.

Note : We Shall Not Be Responsible For Any Breakage/Damage In Transit. However, All Spare Parts Remain Available At Extra Cost.



EGH-12



EGH-13



UBC-22
UNDER BODY COATING



FG-05
FOUNDRY



PDC-01
PRESSURE DIE CAST



OSG-07
OIL SPRAY



SBG-09
SAND BLASTING



PSM-01
PLASTER SPRAY MACHINE



PSM-02
PLASTER SMOOTHING MACHINE

Model No.	Voltage	Cup Capacity	Nozzle Size (mm)	Feed	Power	Cable Length	Weight	Std. Packing
EGH-12	220V~240 V	800 ml	1.8	Suction	550 W	2.0 Mtr.	1.24 Kg	6 Pcs.
EGH-13	230V~240 V	800 ml	2.2	Suction	650 W	2.5 Mtr.	1.68 Kg	4 Pcs.

Model No.	Operating Pressure	Cup Capacity	Feed	Air Inlet	Weight	Std. Packing
UBC-22	80-90 psi	-	Suction	1/4"	335 gm	10 Pcs.
FG-05	40-80 psi	-	Pressure	8 mm	320 gm	10 Pcs.
PDC-01	40-80 psi	-	Pressure	8 mm	510 gm	5 Pcs.
OSG-07	40-80 psi	600 ml	Suction	1/4"	630 gm	16 Pcs.
SBG-09	50-100 psi	600 ml	Gravity	1/4"	530 gm	21 Pcs.
PSM-01	100-150 psi	2000 ml	Gravity	10 mm	1800 gm	2 Pcs.

Model No.	Voltage	Power	Free Speed (rpm)	Thickness	Weight	Std. Packing
PSM-02	230 V-50 Hz	750 W	280-2800 R/min	48 mm	6000 gm	1 Pc.

Note : We Shall Not Be Responsible For Any Breakage/Damage In Transit. However, All Spare Parts Remain Available At Extra Cost.



ABG-04



Brass Thread

ABG-05 P

POWER



Brass Thread

ABG-06



Brass Thread

ABG-07

POWER



Brass Thread

AG-ASB

POWER



DG-10+1



CWG-01

POWER



CWG-02

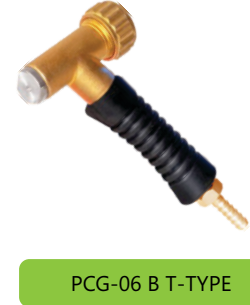
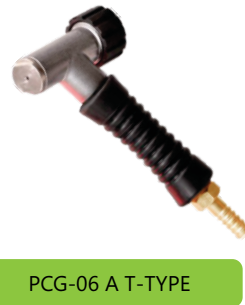
POWER



CWG-03

Model No.	Max. Pressure	Air Inlet	Weight	Std. Packing
ABG-04	8-10 Bar	1/4"	220 gm	50 Pcs.
ABG-05 P	8-10 Bar	1/4"	140 gm	50 Pcs.
ABG-06	8-10 Bar	1/4"	90 gm	100 Pcs.
ABG-07	8-10 Bar	1/4"	90 gm	100 Pcs.
AG-ASB	8-10 Bar	1/4"	55 gm	100 Pcs.
DG-10+1	8-10 Bar	1/4"	125 gm	100 Pcs.
CWG-01	30-70 psi	3/8"	420 gm	20 Pcs.
CWG-02	30-70 psi	3/8"	520 gm	20 Pcs.
CWG-03	30-70 psi	3/8"	420 gm	20 Pcs.

Note : We Shall Not Be Responsible For Any Breakage/Damage In Transit. However, All Spare Parts Remain Available At Extra Cost.



Model No.	Connection	Air Pressure	Weight	Std. Packing	
FG-21	1/4"	30-70 psi	640 gm	14 Pcs.	
FG-23	Conector Type	50-100 bar	460 gm	30 Pcs.	
FG-27	Conector Type	50-100 bar	400 gm	20 Pcs.	
FG-26	Push Type	50-100 bar	60 gm	50 Pcs.	
Model No.	Operating Pressure	Nozzle Size (mm)	Body Material	Weight	Std. Packing
PCG-06 A	50-100 Bar	2.0	Aluminium	530 gm	20 Pcs.
PCG-06 B	50-100 Bar	2.0	Brass	770 gm	20 Pcs.
PCG-10 S.S.	50-100 Bar	2.2	Stainless Steel	520 gm	40 Pcs.
SWN-08	50-100 Bar	2.0, 2.5, 3.0	Stainless Steel	110 gm	50 Pcs.
ACWG	30-70 psi	10	Aluminium	350 gm	10 Pcs.

Note : We Shall Not Be Responsible For Any Breakage/Damage In Transit. However, All Spare Parts Remain Available At Extra Cost.



3/8"

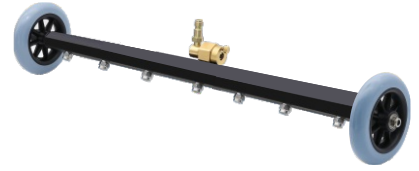
PCG-13 TM TRIGGER TYPE

NEW



WBG 14 - 4 Nozzle

NEW



WBG 14 - 7 Nozzle



PCG-14 S



COUPLER
1/4"

22mm 14mm
BIG / SMALL THREAD

PCG-11 T



PCG-12 TL



NG-24
NOVA GUN

NEW



LONG HANDLE BALL WALL

All Sizes Available

NEW



GAS VALVE

All Sizes Available

Model No.	Operating Pressure	Weight	Std. Packing
PCG-13 TM	220 Bar	550 gm	10 Pcs.
WBG-14 (4 Nozzle)	220 Bar	1.200 gm	1 Pc.
WBG-14 (7 Nozzle)	220 Bar	1.700 gm	1 Pc.
PCG-14 S	220 Bar	430 gm	10 Pcs.
PCG-11 T	220 Bar	520 gm	10 Pcs.
PCG-12 TL	220 Bar	700 gm	10 Pcs.

Model No.	Operating Pressure	Cup Capacity	Feed	Air Inlet	Weight	Std. Packing
NG-24	40-80 psi	1000 ml	Suction	1/4"	780 gm	10 Pcs.

Note : We Shall Not Be Responsible For Any Breakage/Damage In Transit. However, All Spare Parts Remain Available At Extra Cost.

OTHER SPRAY GUN



ONIDA



NOVA-1



NOVA-1/2



POWER -1



POWER -1/2



POWER OIL GUN



POWER-1/4



J.K. INDIA-1/4



USA INDIA-1/4



SUPER SPRAY



AC-30



AC-60



600 ml CUP MALE



600 ml CUP FEMALE



600 ml CUP PF-01



600 ml S.S. CUP



600 ml M.S. CUP



600 ml CUP



600 ml SUCTION CUP



1000 ml SUCTION CUP



600 ml CUP AIR GUNZA



SIDE CUP



300 ml CUP MALE



300 ml CUP FEMALE



300 ml S.S. CUP



300 ml M.S. CUP



300 ml CUP PF-02



300 ml CUP



100 ml CUP MALE



100 ml CUP FEMALE



100 ml S.S. CUP



100 ml ALUMINUM CUP



300 ml OIL SPRAY CUP



800 ml CUP EGH-12



800 ml CUP EGH-13



700 ml FG-21 CUP



600 ml S-990 CUP

1 COMPRESSION ADAPTOR MALE X FEMALE

Code No.	Male(Bsp)	Female(Npt)	Rate
CAMF 001	1/8	1/4	
CAMF 002	1/4	1/4	
CAMF 003	1/4	3/8	
CAMF 004	3/8	1/4	



2 HEX SOCKET

Code No.	Size	Rate/Pc.
HS 001	1/8 1/8	
HS 002	1/4 1/8	
HS 003	1/4 1/4	
HS 004	1/4 3/8	
HS 005	1/4 1/2	
HS 006	3/8 3/8	
HS 007	3/8 1/2	
HS 008	1/2 1/2	
HS 009	3/4 3/8	
HS 010	3/4 1/2	
HS 011	3/4 3/4	
HS 012	1 3/4	
HS 013	1 1	



3 Y JOINT NIPPLE (HOSE)

Code No.	Tube ID	Rate/Pc.
YJN 001	1/4	
YJN 002	5/16	
YJN 003	3/8	
YJN 004	1/2	



4 CROSS JOINT NIPPLE (HOSE)

Code No.	Tube ID	Rate/Pc.
CJN 001	1/4	
CJN 002	5/16	
CJN 003	3/8	
CJN 004	1/2	



5 HEX PLUG (BSP)

Code No.	Size	Rate/Pc.
HHP 001	1/8	
HHP 002	1/4	
HHP 003	3/8	
HHP 004	1/2	
HHP 005	3/4	
HHP 006	1	



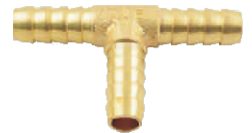
6 STRAIGHT JOINT NIPPLE (HOSE)

Code No.	Tube ID	Rate/Pc.
SJN 001	3/16	
SJN 002	1/4	
SJN 003	5/16	
SJN 004	3/8	
SJN 005	1/2	
SJN 006	3/4	



7 TEE JOINT NIPPLE (HOSE)

Code No.	Tube ID	Rate/Pc.
TJN 001	3/16	
TJN 002	1/4	
TJN 003	5/16	
TJN 004	3/8	
TJN 005	1/2	
TJN 006	5/8	
TJN 007	3/4	
TJN 008	1	



8 HOSE NIPPLE FEMALE

(FEMALE X HOSE)

Code No.	Tube ID	Rate/Pc.
HNF 001	1/8 1/8	
HNF 002	1/8 1/4	
HNF 003	1/8 5/16	
HNF 004	1/8 3/8	
HNF 005	1/4 1/8	
HNF 006	1/4 1/4	
HNF 007	1/4 5/16	
HNF 008	1/4 3/8	
HNF 009	1/4 1/2	
HNF 010	3/8 1/4	
HNF 011	3/8 5/16	
HNF 012	3/8 3/8	
HNF 013	3/8 1/2	
HNF 014	1/2 1/4	
HNF 015	1/2 5/16	
HNF 016	1/2 3/8	
HNF 017	1/2 1/2	
HNF 018	3/4 3/4	
HNF 019	1 1	
HNF 020	1 3/8	
HNF 021	1 1/2	
HNF 022	1 5/8	



9 HOSE NIPPLE MALE

(BSP X HOSE)

Code No.	Tube ID	Rate/Pc.
HNM 001	1/8 1/8	
HNM 002	1/8 1/4	
HNM 003	1/8 5/16	
HNM 004	1/8 3/8	
HNM 005	1/8 1/2	
HNM 006	1/4 1/8	
HNM 007	1/4 1/4	
HNM 008	1/4 5/16	
HNM 009	1/4 3/8	
HNM 010	1/4 1/2	
HNM 011	3/8 1/4	
HNM 012	3/8 5/16	
HNM 013	3/8 3/8	
HNM 014	3/8 1/2	
HNM 015	1/2 1/4	
HNM 016	1/2 5/16	
HNM 017	1/2 3/8	
HNM 018	1/2 1/2	
HNM 019	1/2 5/8	
HNM 020	1/2 3/4	
HNM 021	3/4 3/8	
HNM 022	3/4 1/2	
HNM 023	3/4 5/8	
HNM 024	3/4 3/4	
HNM 025	3/4 1	
HNM 026	1 3/8	
HNM 027	1 1/2	
HNM 028	1 5/8	
HNM 029	1 3/4	
HNM 030	1 1	
HNM 031	1 1/4 1 1/4	
HNM 032	1 1/2 1 1/2	
HNM 033	2 2	
HNM 034	2 1/2 2 1/2	
HNM 035	3 3	
HNM 036	4 4	



10 EQUAL PU TEE ASSEMBLY

(TUBEOD X TUBEOD X TUBEOD)

Code No.	Size	Rate/Pc.
EPUT 001	6 mm 6 mm 6 mm	
EPUT 002	8 mm 8 mm 8 mm	
EPUT 003	10 mm 10 mm 10 mm	
EPUT 004	12 mm 12 mm 12 mm	



11 EQUAL PU ELBOW ASSEMBLY

(TUBEOD X TUBEOD)

Code No.	Tube ID	Rate/Pc.
EPUE 001	6 mm 6 mm	
EPUE 002	8 mm 8 mm	
EPUE 003	10 mm 10 mm	
EPUE 004	12 mm 12 mm	



12 PU CONNECTOR ASSEMBLY

(BSP X TUBEOD)

Code No.	Tube ID	Rate/Pc.
PCU 001	1/8 6 mm	
PCU 002	1/8 8 mm	
PCU 003	1/4 6 mm	
PCU 004	1/4 8 mm	
PCU 005	1/4 10 mm	
PCU 006	1/4 12 mm	
PCU 007	3/8 6 mm	
PCU 008	3/8 8 mm	
PCU 009	3/8 10 mm	
PCU 010	3/8 12 mm	
PCU 011	3/8 14 mm	
PCU 012	1/2 8 mm	
PCU 013	1/2 10 mm	
PCU 014	1/2 12 mm	
PCU 015	1/2 16 mm	



13 EQUAL PU CONNECTOR ASSEMBLY

(TUBEOD X TUBEOD)

Code No.	Tube ID	Rate/Pc.
EPUC 001	6 mm 6 mm	
EPUC 002	8 mm 8 mm	
EPUC 003	10 mm 10 mm	
EPUC 004	12 mm 12 mm	



14 PU CONNECTOR FEMALE ASSEMBLY

(FEMALE X TUBEOD)

Code No.	Tube ID	Rate/Pc.
PUF 001	1/8 6 mm	
PUF 002	1/8 8 mm	
PUF 003	1/4 6 mm	
PUF 004	1/4 8 mm	
PUF 005	1/4 10 mm	



Exclusive Range of Garage Equipments...

Quick Release
Coupler

Air
Inflators

Pu Hose /
Pu Coils

Air
Compressor

Tyre Opener
/ Pressure
Switch

Impact
Wrenches

Labour Machine
/ Air Inflator
/ Socket Set

Socket

Trolley /
Gear Box /
Balloon Jack

Pressure Washer

Vacuum Cleaner
/ Foam Tank
/ Palm Sander
/ FRL

Welding Cables /
High Pressure Hose

NEW



MODEL	PNEUMATIC COUPLING - REGULAR QUALITY MADE OF STEEL							
SIZE	PH	PP	PM	PF	SH	SP	SM	SF
1/4" /20								
3/8" /30								
1/2" /40								

M.O.Q. : 50 Nos. Each

NEW



MODEL	PNEUMATIC COUPLING (HIGH QUALITY - JAPANESE STANDARD) STEEL BODY - ONE TOUCH							
SIZE	JPH	JPP	JPM	JPF	JSH	JSP	JSM	JSF
1/4" /20								
3/8" /30								
1/2" /40								

M.O.Q. : 20 Nos. Each

NEW



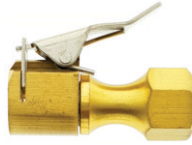
MODEL	PNEUMATIC COUPLING 304 STAINLESS STEEL							
SIZE	SJPH	SJPP	SJPM	SJPF	SJSH	SJSP	SJSM	SJSF
1/4" /20								
3/8" /30								
1/2" /40								

M.O.Q. : 10 Nos. Each



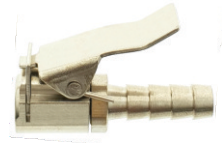
OPEN END

NM-01



CLOSE END

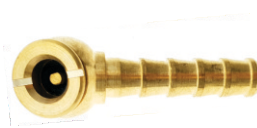
NM-02



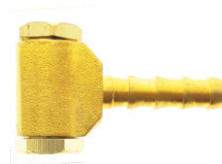
NM-03



NM-04



NM-05



NM-06



NM-07



NM-08



NM-09



NM-10



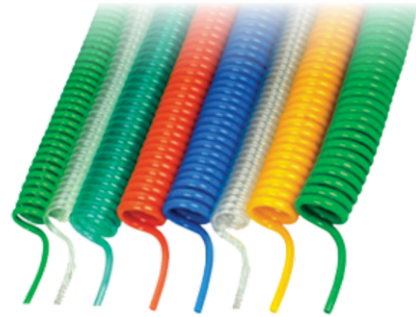
NM-11



NM-12



PU HOSE



PU COIL

Model No.	Size - O.D. x I.D. (mm)	Standard Length Meters / Roll	Price
ELP-0425	4x2.5	200	
ELP-0604	6x4	100	
ELP-0805	8x5	100	
ELP-0855	8x5.5	100	
ELP-0806	8x6	100	
ELP-1065	10x6.5	100	
ELP-1080	10x8	100	
ELP-1280	12x8	100	
ELP-1612	16x12	50	

PU COIL

Model No.	Size - O.D. x I.D. (mm)	Price
ELP-0604C	6x4	
ELP-0805C	8x5	
ELP-1065C	10x6.5	
ELP-1208C	12x8	

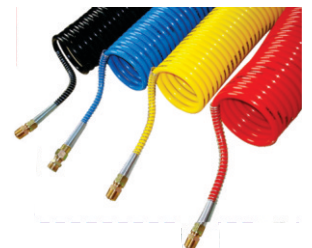
* Also, Available With End Fittings, With 125/- Extra On 8x5 mm Coils & 150/- Extra On 12x8 mm Coils On Nett. Prices.
(end Fittings Contains Both Size Springs & Brass Fittings)

Note :

M.O.Q. Of Any Size Of Coil Is 10 Nos.

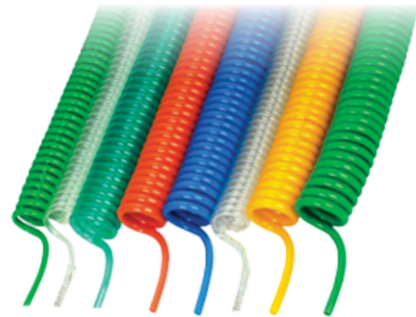
5% Extra On The Rates Shall Be Charged For All Other Colors Except Blue & Yellow.

Pu Coils Are Available In 4 Sizes - 5 Mtr., 10 Mtr., 15 Mtr. & 20 Mtr.





PU HOSE



PU COIL

Model No.	Size - O.D. x I.D. (mm)	Standard Length Meters / Roll	Price
PWR-0425	4x2.5	200	
PWR-0604	6x4	100	
PWR-0805	8x5	100	
PWR-0855	8x5.5	100	
PWR-0806	8x6	100	
PWR-1065	10x6.5	100	
PWR-1080	10x8	100	
PWR-1280	12x8	100	
PWR-1612	16x12	50	

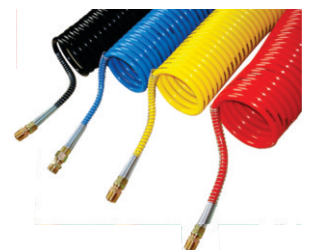
PU COIL

Model No.	Size - O.D. x I.D. (mm)	Price
PWR-0604C	6x4	
PWR-0805C	8x5	
PWR-1065C	10x6.5	
PWR-1208C	12x8	

* Also, Available With End Fittings, With 125/- Extra On 8x5 mm Coils & 150/- Extra On 12x8 Mm Coils On Nett. Prices.
(end Fittings Contains Both Size Springs & Brass Fittings)

Note :
M.O.Q. Of Any Size Of Coil Is 10 Nos.
5% Extra On The Rates Shall Be Charged For All Other Colors Except Blue & Yellow.

Pu Coils Are Available In 4 Sizes - 5 Mtr., 10 Mtr., 15 Mtr. & 20 Mtr.





24 Ltr. Air Compressor

AC-24DC - 1.5 HP



30 Ltr. Air Compressor

AC-30DC - 1 HP



50 Ltr. Air Compressor

AC-50DC - 2 HP



30 Ltr. Air Compressor

AC-30DR - 1 HP



100 Ltr. Air Compressor

AC-100LT - 2 HP



150 Ltr. Air Compressor

AC-150LT - 3 HP



6 Ltr. Air Compressor

AC-06C - 1 HP



30 Ltr. Air Compressor

AC-30C



50 Ltr. Air Compressor

AC-50C

Model No.	HP	Speed	Air Flow	Max. Pressure	Tank Volume	Weight (N.W)	Std. Packing
AC-24DC	1.5	1440 rpm	240 L/min	8 bar	24 Ltr.	31 kg	1 Pc.
AC-30DC	1	1440 rpm	135 L/min	8 bar	30 Ltr.	31 kg	1 Pc.
AC-50DC	2	1440 rpm	2*135 L/min	8 bar	50 Ltr.	42 kg	1 Pc.
AC-30DR	1	1440 rpm	135 L/min	8 bar	30 Ltr.	31 kg	1 Pc.
AC-100LT	2	1050 rpm	170 L/min	8 bar	100 Ltr.	64 kg	1 Pc.
AC-150LT	3	1050 rpm	250 L/min	8 bar	150 Ltr.	84 kg	1 Pc.
AC-06C	1	1440 rpm	135 L/min	8 bar	6 Ltr.	18 kg	1 Pc.

Model No.	Voltage	HP	Speed	Tank Volume	Air Flow	Max. Pressure	Outlet Ball Valve	Noise	Weight	Std. Packing
AC-30C	220V/50HZ	2.0	2850 rpm	30 Ltr.	200 L/min	8 bar	2x1/4"	92 db	22 kg	1 Pc.
AC-50C	220V/50HZ	2.0	2850 rpm	50 Ltr.	200 L/min	8 bar	2x1/4"	92 db	32 kg	1 Pc.

Note : We Shall Not Be Responsible For Any Breakage/Damage In Transit. However, All Spare Parts Remain Available At Extra Cost.



10.5 Kg

TBB-01



11.5 Kg

BBG-01



12.5 Kg

IWT-01



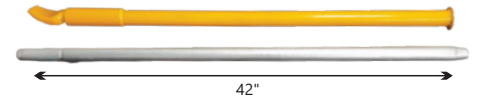
12.5 Kg

TV-01



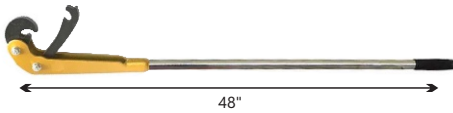
14 Kg

TMDT-01



11 Kg

H-01 HAMMER



6.5 Kg

P-01 PLIER



ACS-15/ACS-15V



KB-1/KB-4

Model No.	Description	Power		Weight	Std. Packing	
TBB-01	MANUAL TYRE BEAD BREAKER	Pneumatic		10.5 Kg	1 Pcs.	
Model No.	Description	Max. Pressure	Thickness	Weight	Std. Packing	
BBG-01	BEAD BLASTER - 5 GALLON	0.8 Mpa	3 mm	11.5 Kg	1 Pcs.	
Model No.	Description	Thickness		Weight	Std. Packing	
IWT-01	IMPACT WRENCH TROLLEY	-		12.5 Kg	1 Pcs.	
Model No.	Description	Output Power	Timer Range	Temperature Range	Weight	Std. Packing
TV-01	Tyre Valcanizer	2*500W	0-180 min.	150-180° Centigrade	12.5 Kg	1 Pcs.
Model No.	Description	Type		Weight	Std. Packing	
TMDT-01	TYRE MOUNTING DISMOUNTING TOOL	Manual		14 Kg	1 Pcs.	

Note : We Shall Not Be Responsible For Any Breakage/Damage In Transit. However, All Spare Parts Remain Available At Extra Cost.



IW 02-E



IW 02-C



IW 02-127



IW 02-L



IW 02



IW 02-CM



IW 02-20B



IW 02-A25



IW 02-X8

Model No.	Max. Torque	Free Speed	Size	Bolt Capacity	Mechanism	Air Inlet	Air Pressure	Air Consumption	Weight	Std. Packing
IW 02-E	550 N.m.	11000 rpm	1/2"	13 mm	Twin Hammer	1/4"	6-8 Kg	0.22 m ³ /min	1.4 Kg	5 Pcs.
IW 02-C	520 N.m.	9300 rpm	1/2"	14 mm	Twin Hammer	1/4"	6-8 Kg	0.38 m ³ /min	1.7 Kg	5 Pcs.
IW 02-127	520 N.m.	9300 rpm	1/2"	14 mm	Twin Hammer	1/4"	6-8 Kg	0.38 m ³ /min	1.6 Kg	5 pcs.
IW 02-L	680 N.m.	8000 rpm	1/2"	18 mm	Twin Hammer	1/4"	6-8 Kg	0.24 m ³ /min	2.7 Kg	5 Pcs.
IW 02	850 N.m.	7500 rpm	1/2"	18 mm	Twin Hammer	1/4"	6-8 Kg	0.25 m ³ /min	3.1 Kg	5 Pcs.
IW 02-CM	900 N.m.	8000 rpm	1/2"	18 mm	Twin Hammer	1/4"	6-8 Kg	0.25 m ³ /min	2.15 Kg	5 Pcs.
IW 02-20B	600 N.m.	9500 rpm	1/2"	14 mm	Twin Hammer	1/4"	6-8 Kg	0.37 m ³ /min	1.5 Kg	5 pcs.
IW 02-A25	520 N.m.	9500 rpm	1/2"	14 mm	Twin Hammer	1/4"	6-8 Kg	0.34 m ³ /min	1.5 Kg	5 pcs.
IW 02-X8	880 N.m.	8000 rpm	1/2"	16 mm	Twin Hammer	1/4"	6-8 Kg	0.37 m ³ /min	1.5 Kg	5 pcs.

Note : We Shall Not Be Responsible For Any Breakage/Damage In Transit. However, All Spare Parts Remain Available At Extra Cost.



1/2"

IW 02-S



1/2"

IW 02-A16



3/4"

IW 03



3/4"

IW 03-34B



3/8"

IW 01



1.5"

IW 05-S



1"

IW 04-P



1"

IW 04-PT



1"

IW 04-PH

Model No.	Max. Torque	Free Speed	Size	Bolt Capacity	Mechanism	Air Inlet	Air Pressure	Air Consumption	Weight	Std. Packing
IW 02-S	520 N.m.	9000 rpm	1/2"	13 mm	Twin Hammer	1/4"	6-8 Kg	0.22 m ³ /min	1.6 Kg	5 Pcs.
IW 02-A16	520 N.m.	9300 rpm	1/2"	14 mm	Twin Hammer	1/4"	6-8 Kg	0.45 m ³ /min	1.12 Kg	5 Pcs.
IW 03	1350 N.m.	6000 rpm	3/4"	32 mm	Twin Hammer	3/8"	6-10 Kg	0.38 m ³ /min	5.2 Kg	2 Pcs.
IW 03-34B	1200 N.m.	6000 rpm	3/4"	20 mm	Twin Hammer	3/8"	6-8 Kg	0.79 m ³ /min	5.0 Kg	2 Pcs.
IW 01	520 N.m.	9000 rpm	3/8"	13 mm	Twin Hammer	1/4"	6-8 Kg	0.22 m ³ /min	1.6 Kg	5 Pcs.
IW 05-S	7200 N.m.	2800 rpm	1.5"	52 mm	Pinless Hammer	1/2"	6-10 Kg	1.35 m ³ /min	19.2 Kg	1 Pc.
IW 04-P	1700 N.m.	4600 rpm	1"	33 mm	Twin Hammer	1/2"	6-10 Kg	0.40 m ³ /min	7.3 Kg	2 Pcs.
IW 04-PT	2180 N.m.	4500 rpm	1"	41 mm	Pinless Hammer	1/2"	8-12 Kg	0.68 m ³ /min	12.5 Kg	2 Pcs.
IW 04-PH	2400 N.m.	4500 rpm	1"	30 mm	Twin Hammer	1/2"	6-10 Kg	0.80 m ³ /min	9.0 Kg	2 Pcs.

Note : We Shall Not Be Responsible For Any Breakage/Damage In Transit. However, All Spare Parts Remain Available At Extra Cost.



IW 04-L



IW 04



IW 04-T



IW 04-T PLUS



IW 04-H



IW 04-Y19



TU 90-D



TU 80-D



IW 04-CL

Model No.	Max. Torque	Free Speed	Size	Bolt Capacity	Mechanism	Air Inlet	Air Pressure	Air Consumption	Weight	Std. Packing
IW 04-L	2180 N.m.	4200 rpm	1"	41 mm	Pinless Hammer	1/2"	8-12 Kg	0.70 m ³ /min	14.0 Kg	1 Pc.
IW 04	2980 N.m.	3800 rpm	1"	48 mm	Pinless Hammer	1/2"	8-12 Kg	0.71 m ³ /min	17.0 Kg	1 Pc.
IW 04-T	3200 N.m.	3800 rpm	1"	39 mm	Pinless Hammer	1/2"	8-12 Kg	0.70 m ³ /min	16.4 Kg	1 Pc.
IW 04-T PLUS	3200 N.m.	3200 rpm	1"	39 mm	Pinless Hammer	1/2"	8-12 Kg	0.71 m ³ /min	16.4 Kg	1 Pc.
IW 04-H	3800 N.m.	3300 rpm	1"	50 mm	Pinless Hammer	1/2"	8-12 Kg	0.78 m ³ /min	19.0 Kg	1 Pc.
IW 04-Y19	4500 N.m.	4200 rpm	1"	50 mm	Pinless Hammer	1/2"	8-12 Kg	1.05 m ³ /min	16.8 Kg	1 Pc.
TU 90-D	5000 N.m.	2700 rpm	1"	55mm	Pinless Hammer	1/2"	8-10 Kg	1.24 m ³ /min	19.2 Kg	1 Pc.
TU 80-D	5200 N.m.	3000 rpm	1"	55mm	Pinless Hammer	1/2"	8-10 Kg	1.24 m ³ /min	16.8 Kg	1 Pc.
IW 04-CL	1950 N.m.	5000 rpm	1"	41 mm	Twin Hammer	1/2"	8-12 Kg	0.50 m ³ /min	7.3 Kg	1 Pc.

Note : We Shall Not Be Responsible For Any Breakage/Damage In Transit. However, All Spare Parts Remain Available At Extra Cost.



IW 04-S



LSM-01



LSM-02



FP-01



AP-01



12mm x 10 Mtr.

TAFLOX TAPE

NEW



38 MM
SOCKET SET (15 Pcs.)

8,9,10,11,12,13,14,15,17,19,21,22,24,27,32 mm

NEW



78 MM
SOCKET SET (15 Pcs.)

8,9,10,11,12,13,14,15,17,19,21,22,24,27,32 mm

NEW



90 MM
SOCKET SET (14 Pcs.)

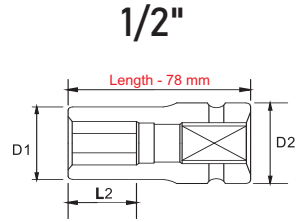
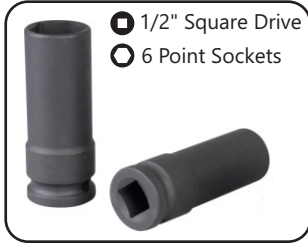
17,19,21,22,24,26,27,28,30,32,34,36,38,41 mm

Model No.	Max. Torque	Free Speed	Size	Bolt Capacity	Mechanism	Air Inlet	Air Pressure	Air Consumption	Weight	Std. Packing
IW 04-S	2980 N.m.	3800 rpm	1"	48 mm	Pinless Hammer	1/2"	8-12 Kg	0.71 m ³ /min	15.6 Kg	1 Pc.
Model No.	Max. Torque	Size	Length	Bolt Capacity	Mechanism	Weight	Std. Packing			
LSM-01	3200 N.m.	1"	360 mm	1:68	Manual	9 Kg	3 Pcs.			
LSM-02	3800 N.m.	1"	365 mm	1:88	Manual	10 Kg	3 Pcs.			
Model No.	Power Source	Body	Piston Material	Air Nozzle	Air Hose Length	Weight	Std. Packing			
FP-01	Manual	M.S.	Cast Iron	Plastic	0.75 Mtr.	2.1 Kg	12 Pcs.			
AP-01	DC 12 Volt	ALU	-	Brass	1 Mtr.	1.7 Kg	6 Pcs.			

Note : We Shall Not Be Responsible For Any Breakage/Damage In Transit. However, All Spare Parts Remain Available At Extra Cost.

All Spare Parts Available

Std. Packing - 10 pcs.

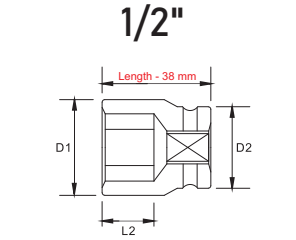


6-Point Deep Impact Sockets-Thin Wall

1/2" Square Drive 6 Point Sockets

Size (mm)	8	9	10	11	12	13	14	15
Price-								
Size (mm)	17	19	21	22	24	27	30	32
Price-								

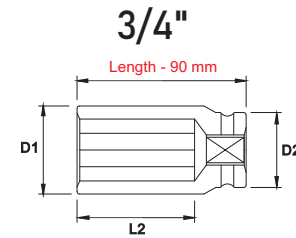
Std. Packing - 10 pcs.



6-Point STD Impact Sockets

1/2" Square Drive 6 Point Sockets

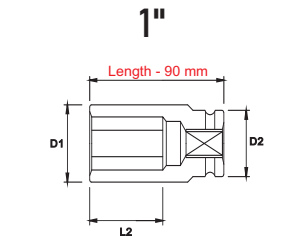
Size (mm)	8	9	10	11	12	13	14	15
Price-								
Size (mm)	17	19	21	22	24	27	30	32
Price-								



6-Point Deep Impact Sockets

3/4" Square Drive 12 Point Sockets

Size (mm)	17	19	21	22	24	26	27
Price-							
Size (mm)	28	30	32	34	36	38	41
Price-							



6-Point STD Impact Sockets

1" Square Drive 6 Point Sockets

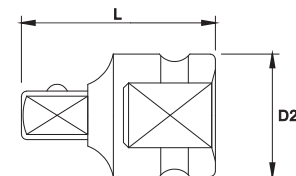
Size (mm)	24	26	27	28	30	32		
Price-								
Size (mm)	33	34	35	36	38	41		
Price-								
Size (mm)	45	46	50	55	60	65	70	
Price-								
Size (mm)	75	80	85	90	95	100	105	110
Price-								



FOR SOCKET
UJ-01
UNIVERSAL JOINT



FOR HOSE
UJ-02
UNIVERSAL JOINT



Impact Adaptor

Female Size Male

<input checked="" type="radio"/> Female	3/8"	1/2"	1/2"	1/2"	3/4"	3/4"	1"	1"
<input type="radio"/> Male	1/2"	3/8"	3/4"	1"	1/2"	1"	1/2"	3/4"
Price-								



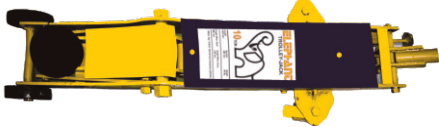
TJ-03



ATJ-03H



ATJ-04H



TJ-05



GBJ-01



Double Safety Locking Pin

JS-3T



BJ-03



BJ-05

Model No.	Capacity	Maximum Height (mm)	Minimum Height (mm)	Plate Size (mm)	Length (mm)	Weight	Price
TJ-01	2 Ton	390	165	6	736	21.95 kg.	
TJ-02	2.5 Ton	460	165	7	762	25.85 kg.	
TJ-03	3 Ton	460	165	8	762	28.20 kg.	
NEW TJ-04	4 Ton	525	160	10	890	35.50 kg.	
TJ-05	5 Ton	381	140	10	1397	74 kg.	
TJ-06	10 Ton	431	140	12	1447	98 kg.	
TJ-07	15 Ton	431	155	15	1447	150 kg.	
TJ-08	20 Ton	431	190	20	1447	180 kg.	
TJ-09	25 Ton	431	190	25	1447	200 kg.	
ATJ-03H	3 Ton	456	120	-	-	29.5 kg.	
ATJ-04H	4 Ton	510	75	-	-	32 kg.	
GBJ-01	20 mm	762	203	-	812	52 kg.	
GBJ-02	25 mm	762	203	-	812	63 kg.	
NEW JS-3T	3 Ton	415	285	-	-	5.2 kg.	
NEW BJ-03	3 Ton	400	145	-	-	17 kg.	
NEW BJ-05	5 Ton	400	150	-	-	24 kg.	

Note : We Shall Not Be Responsible For Any Breakage/Damage In Transit. However, All Spare Parts Remain Available At Extra Cost.



← 1 PHASE

HPP 01-2.2 HP



← 1 PHASE

HPP 02- 4 HP



← 3 PHASE

HPP 03-7.5 HP



HPP-01 Head

WP 01-2.2 HP



HPP-02 Head

WP 02- 4 HP



HPP-03 Head

WP 03-7.5 HP

NEW



Aluminium Winding

V2S-ALU



Copper Winding

V2S



CC 280-1.75 HP

Note : Different Size Hose Available for all Washers. (10, 15 , 20, 25, 30 Mtr.)

Model No.	Motor	Power	Max. Pressure	Voltage	Speed	Flow Rate	Weight
HPP 01	2.2 HP	1650 W	90 bar	220 V	2800 rpm	8 L/min	32 Kg
HPP 02	4 HP	2250 W	100 bar	380 V	1450 rpm	15 L/min	56 Kg
HPP 03	7.5 HP	4100 W	210 bar	380 V	1450 rpm	15 L/min	66.5 Kg
WP 01	2.2 HP	1650 W	90 bar	220 V	2800 rpm	8 L/min	5 Kg
WP 02	4 HP	2250 W	100 bar	380 V	1450 rpm	15 L/min	7.5 Kg
WP 03	7.5 HP	4100 W	210 bar	380 V	1450 rpm	15 L/min	8.5 Kg
V2S	2 HP	1500 W	100 bar	220 V	2800 rpm	12 L/min	12 Kg
CC 280	1.75 HP	1300 W	60 bar	220 V	2800 rpm	10 L/min	22 Kg

Note : We Shall Not Be Responsible For Any Breakage/Damage In Transit. However, All Spare Parts Remain Available At Extra Cost.



20 LTR. VACUUM CLEANER

VC-20



35 LTR. VACUUM CLEANER

VC-35



80 LTR. VACUUM CLEANER

VC-80



MOTOR-1500W



WITH GUN

FTG-01 / FT-25



WITH GUN

FTG-02 / FT-26



6" AIR PALM SANDER

AT-991LA



LG NRV - 1/2"



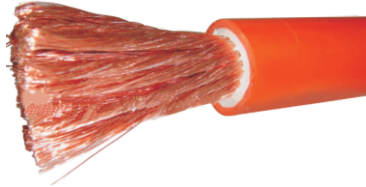
Other Brand

AC-4010-04 1/2"
AC-2010-02 1/4"
AF-4000-04 1/2"
AF-2000-02 1/4"
AW-4000-04 1/2"
AW-2000-02 1/4"
AR-4000-04 1/2"
AR-2000-02 1/4"

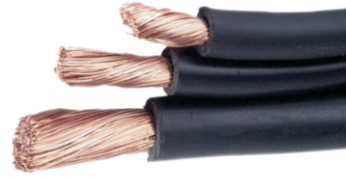
FRL

Model No.	Capacity	Power	Air Flow Rate	Vacuum Suction	Voltage	Length of Cable	Weight	Std. Packing
VC-20	20 Ltr.	1500 W	53 L/s	200 mbar	220-240 V	5 Mtr.	10.65 Kg	1 Pc.
VC-35	35 Ltr.	1500 W	53 L/s	200 mbar	220-240 V	5 Mtr.	11.95 Kg	1 Pc.
VC-80	80 Ltr.	4500 W	120 L/s	200 mbar	220-240 V	5 Mtr.	27.10 Kg	1 Pc.
Model No.	Air Inlet	Air Pressure	Thickness	Weight	Std. Packing			
FT-25	1/4"	1-2 bar	1.2 mm	14.250 kg	1 Pc.			
FT-26	1/4"	1-2 bar	1.5 mm	18 kg	1 Pc.			

Note : We Shall Not Be Responsible For Any Breakage/Damage In Transit. However, All Spare Parts Remain Available At Extra Cost.



DOUBLE RUBBER



SUPER D COPPER



8.5 mm



10 mm



13 mm

Note : Welding Cable Available in ISI Marka Also.

Gauge	Description	Sq./mm	Wire	Amp.	Rode Size	Price
38	Popular	25	300	200	12-10	
38	Popular	35	500	300	12-10	
38	Popular	50	700	400	12-8	
38	Popular	70	1000	500	12-8	
36	Deluxe	25	300	300	12-8	
36	Deluxe	35	500	400	12-8	
36	Deluxe	50	700	500	12-8	
36	Deluxe	70	1000	600	12-8	

Model No.	Size	Working Pressure	Weight	Layer	Price
HPH-8.5	8.5 mm	200 kg / cm ²	14 Kg	5 Layer	
HPH-10	10 mm	200 kg / cm ²	17 Kg	5 Layer	
HPH-13	13 mm	200 kg / cm ²	22 Kg	5 Layer	

Note : Price can be changed without Prior Notice.

Other Brand

PNEUMATIC TOOLS



Impact Wrench Kit

AT-5004 SG



AT-5040 B



1/2" Air Ratchet Wrench

AT-5059



4" Air Angle Grinder

AT-282



1/4" Mini Air Die Grinder

AT-7032 B



1/4" Mini Air Die Grinder

AT-7032 BK



3/16" Hydraulic Riveter Kit

AT-6015 SG



10 mm Air Belt Sander

AT-480 SG



1/4" Air Screwdriver

AT-W5



Air Stapler

AT-8016



Air Nailer

F-30



Air Nailer

F-50

Painter

ELEPHANT

A series of horizontal dotted lines for handwriting practice, consisting of 20 lines spaced evenly down the page.



Painter

ELEPHANT

TERMS & CONDITION

Discounts	As applicable
Taxes	Extra as applicable
Freight	Extra as applicable
Insurance	Extra as applicable

This Cancels All Our Previous Price Lists